



Quality - Sustainability according German requirements ?

华丰地块城市肌理分散，缺乏整体上的联系与系统性。于是我们将现有的建筑物淡化处理为城市背景，将三大中心区嵌入地块内，将原有脉络相整合并丰富饱满其城市肌理。同时将突现三大中心区各自的城市功能的综合性与景观性，将其发展成视觉中心与都市人活动中心。



HuaFeng Complex in Hangzhou City Design
杭州市城北新城华丰综合体城市设计

Quartier without structure. Mixed Land use without character.
New Metro Station, Modern Living and Working, Increase Land value

在滨水空间内充分挖掘其组织形式，建立多种形态的滨水景观空间。结合滨水绿地、公园、亲水平台、开放式临水广场、栈桥等创造丰富的空间形式，为人的活动提供多层次的室外环境，从而提升“水”的价值。



HuaFeng Complex in Hangzhou City Design
杭州市城北新城华丰综合体城市设计

Increase Quality of River System, River landscape and Park, Slow Traffic System

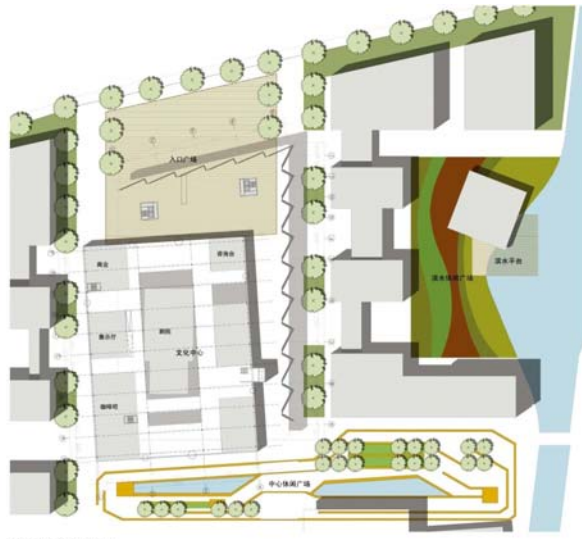


HuaFeng Complex in Hangzhou City Design
杭州市城北新城华丰综合体城市设计

Restore old Factories buildings with good substance and add modern Buildings



内部空间意象



综合体建筑底层平面

HuaFeng Complex in Hangzhou City Design
杭州市城北新城华丰综合体城市设计

Create a unique space for living and working with Sport, Exhibition, Culture, Restaurant, Entertainment facilities



HuaFeng Complex in Hangzhou City Design
杭州市城北新城华丰综合体城市设计



City Design for Overseas innovation Base ZheJiang
浙江海外高层次人才创新园城市设计

Science and Technology Park, Living and working for specialist employees
Sport, Shopping and Culture, Restaurant, Entertainment, Social and Health facilities



City Design for Overseas innovation Base ZheJiang
浙江海外高层次人才创新园城市设计

Energy- and water efficient buildings, achieving sustainable development.



City Design for OverSeas innovation Base ZheJiang
浙江海外高层次人才创新园城市设计

Solar, wind, water and geothermal
energy



City Design for OverSeas innovation Base ZheJiang
浙江海外高层次人才创新园城市设计

Green Environment, Water shuttlebus to the city, all facilities within walking distance



BMW Training Center
宝马培训中心

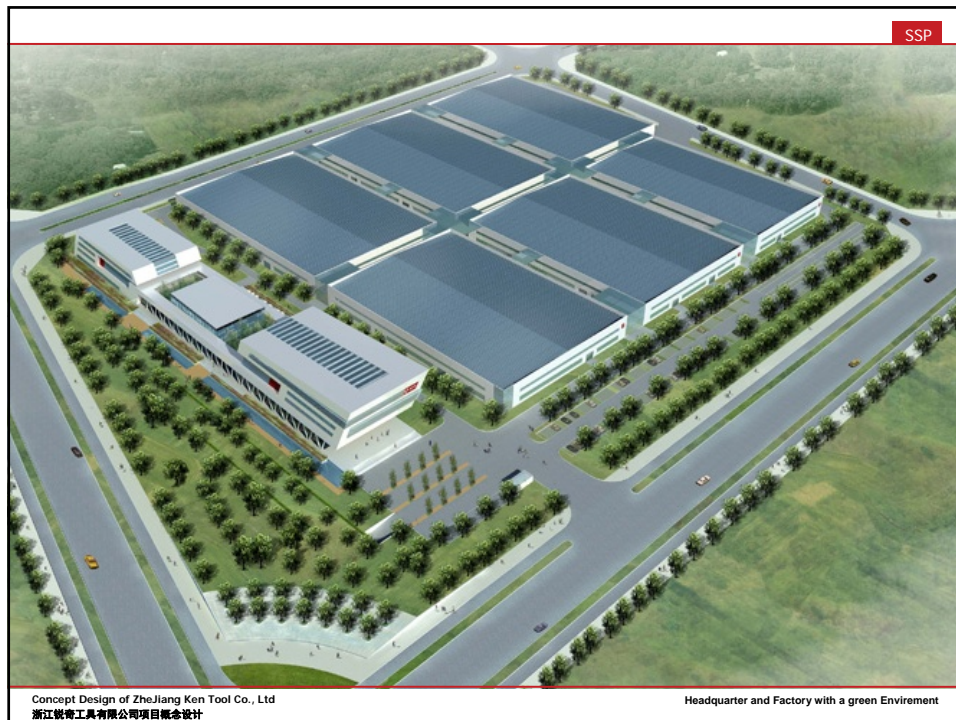
Building Site: Orientation, Compact Geometry of Building, Nature Light, Rain water usage, Seepage Ground, Native Vegetation



BMW Training Center
宝马培训中心

Facade: Insulation Façade $0.8 \text{ W/(M}^2 \cdot \text{K)}$ / Insulation Roof $0.6 \text{ W/(m}^2 \cdot \text{K)}$, Double insulated glazing (low-e), Cantilevering roofs, External sun protection, Bright façade, Natural ventilation







Concept Design of ZheJiang Ken Tool Co., Ltd
浙江锐奇工具有限公司项目概念设计

Over Average Façade and Roof Insulation, Double insulated glazing (low-e), Setback of big glass facades, External sun protection, Water and energy saving measures



Concept Design of ZheJiang Ken Tool Co., Ltd
浙江锐奇工具有限公司项目概念设计

3500 m2 Solar facade, Closed factory façade with nature Ventilation



Concept Design of ZheJiang Ken Tool Co., Ltd
浙江肯奇工具有限公司项目概念设计

Green Inner Factory yard with green Façade.